

LEGEND

- 1

CEMENT TILE ROOF (TYPICAL)
- 2

2X10 SMOOTH FINISH WOOD FASCIA (TYPICAL)
- 3

TEXTURED FINISH CEMENTITIOUS MATERIAL
- 4

DECORATIVE BRACKET
- 5

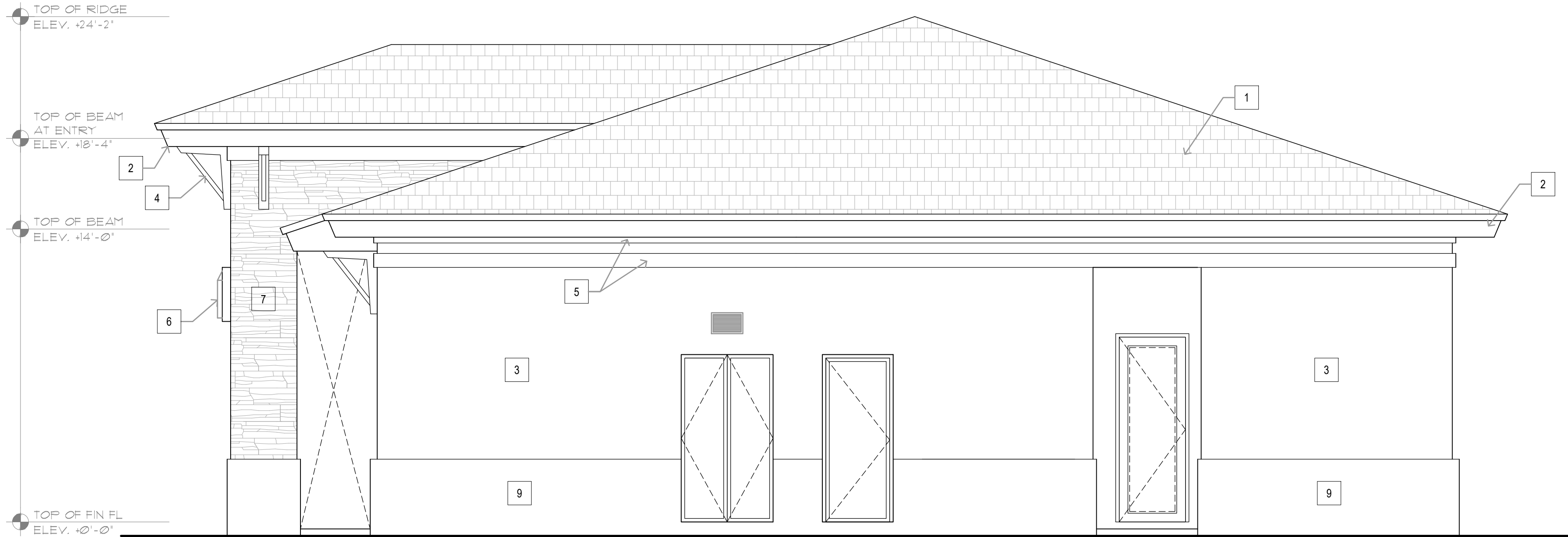
EPS FOAM DECO TRIM
- 6

WALL MOUNTED ELECTRIC LIGHT FIXTURE  
REFER TO ELECTRICAL PLANS
- 7

DECORATIVE STONE VENEER OVER C.M.U. WALL
- 8

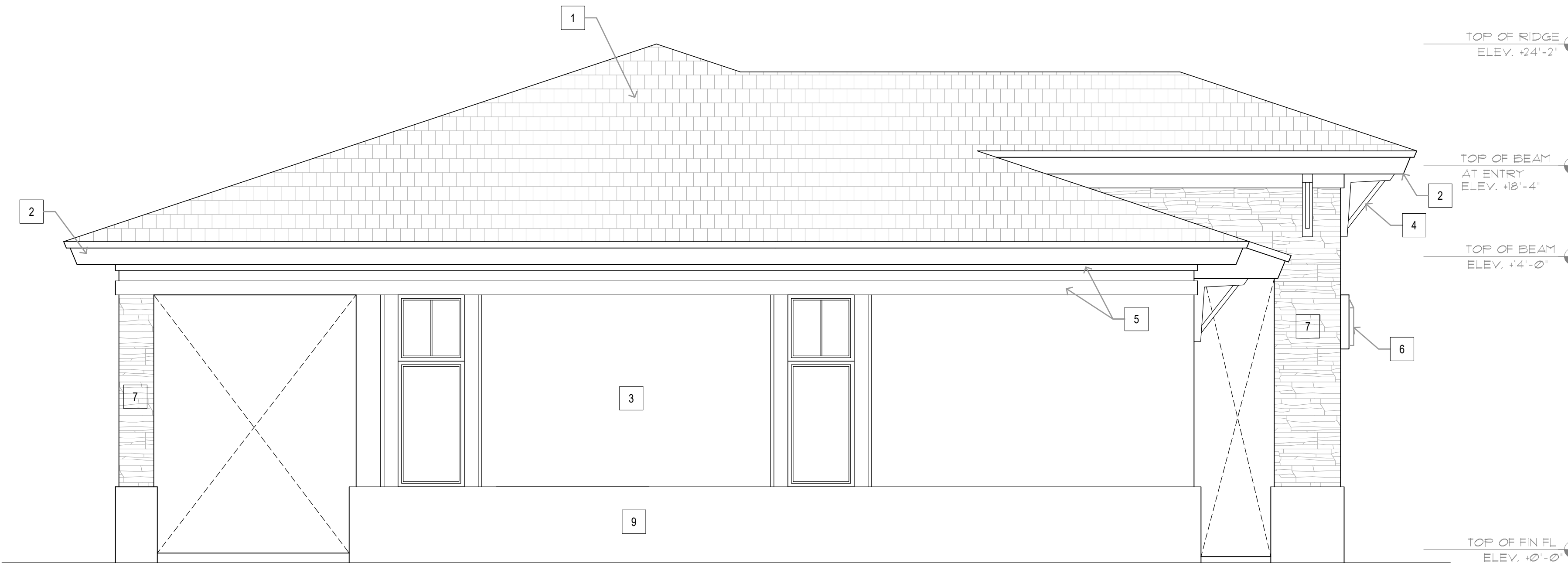
FIXED GLASS WINDOW/PANEL
- 9

SMOOTH FINISH CEMENTITIOUS MATERIAL FINISH  
BASE. TYP. WHERE SHOWN



RIGHT SIDE ELEVATION

SCALE: 1/4" = 1'-0"



LEFT SIDE ELEVATION

SCALE: 1/4" = 1'-0"

PASCUAL  
PEREZ  
KILIDDJIAN  
STARR

ARCHITECTS+PLANNERS

LICENSE # AA 26001357  
EDGARDO PEREZ, AIA  
LICENSE No. : AR 0015394  
MARIO P. PASCUAL, AIA  
LICENSE No. : AR 0008254  
PETER KILIDDJIAN, RA  
LICENSE No. : AR 0093067  
ANDREW STARR, RA  
LICENSE No. : AR 0095130

AT THE BEACON CENTER  
1330 NW 84th AVENUE  
DORAL, FLORIDA 33126  
TELEPHONE: (305) 592-1363  
FACSIMILE: (305) 592-4865  
http://www.ppkarch.com

COPYRIGHT © PASCUAL, PEREZ, KILIDDJIAN  
& STARR, ARCHITECTS+PLANNERS  
The architectural design and detail drawings  
of this building and/or related project are the  
legal property of, and all rights are reserved  
by the Architect. Their use for reproduction,  
construction or distribution is prohibited unless  
authorized in writing by the Architect.

REVISIONS:

OWNER:  
LENNAR HOMES

POMPANO LIVE!  
BY: LENNAR HOMES  
POMPANO BEACH, FLORIDA

SEAL:

CLUBHOUSE

ELEVATIONS

DATE: 2024-08-23  
SCALE: AS SHOWN  
DRAWN: CG/JC  
CHECK BY: PPKS  
JOB NO.:

SA-3

SHEET NO.:

Copyright © 2022 PASCUAL, PEREZ, KILIDDJIAN, STARR - ARCHITECTS + PLANNERS  
The architectural design and detail drawings for this building and / or overall project are the legal property of and all rights are reserved by the Architect. Their use for reproduction, construction or distribution is prohibited unless authorized in writing by Architect.

Received after DRC Meeting  
to address DRC comments  
prior to the submission of a  
Building Permit Application.

Copyright © 2022 PASCUAL, PEREZ, KILIDDJIAN, STARR - ARCHITECTS + PLANNERS  
The architectural design and detail drawings for this building and / or overall project are the legal property of and all rights are reserved by the Architect. Their use for reproduction, construction or distribution is prohibited unless authorized in writing by the Architect.